

# Product Catalogue

**SOMMER**



[www.sommer-usa.com](http://www.sommer-usa.com)

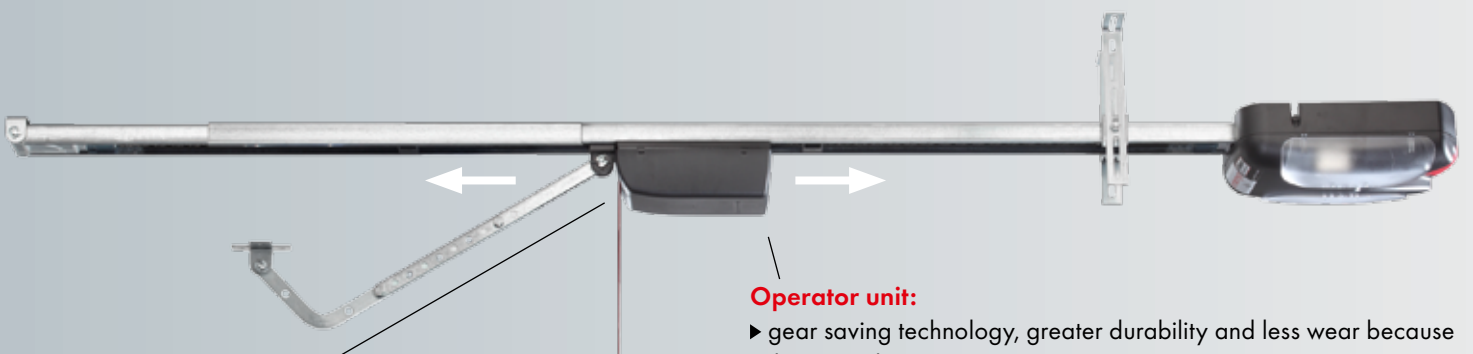
# SOMMER garage door openers: no mai

**synoris**  
garage door operator

## Your benefits:

- ▶ **Unique design:** The synoris garage door opener has a powerful 24V DC-Motor that travels along a stationary chain resulting in an **extremely quiet** garage door opener.
- ▶ **Extremely durable** opener due to the least amount of moving parts of any opener on the market. No moving chain or tooth belt as associated with traditional openers.
- ▶ The motor sprocket is the only moving part. This system does not know any gear damages.
- ▶ Comes with a **lifetime warranty on the whole unit** and two years on all accessories.
- ▶ Eliminates unwanted sagging of chain or belt associated with conventional openers.
- ▶ Fully automatic force adjustment that will not allow a broken door to burn out the motor.
- ▶ Soft start and soft stop including a back jump to relieve stress on motor and door.
- ▶ No maintenance required.

**Stronger than a chain drive and quieter than a belt drive brought together in one state of the art design!**



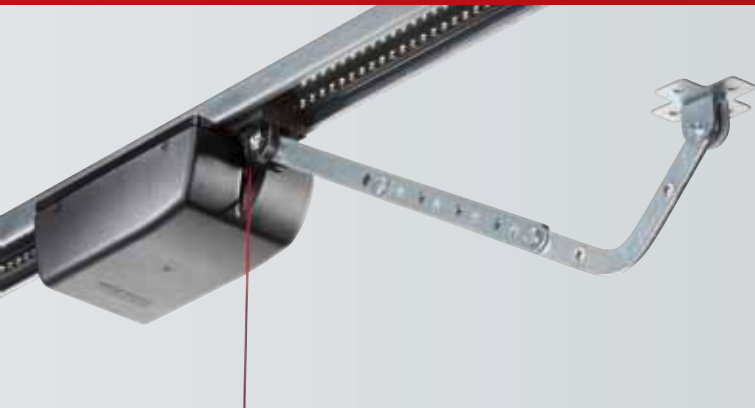
### Manual override:

The SOMMER garage door openers are the only products of their kind that allow the door to be disengaged and engaged in any position. This offers safety and security, e.g. in case of power outage.

### Operator unit:

- ▶ gear saving technology, greater durability and less wear because there is only one moving part
- ▶ chain is stationary, so there is no friction or power loss as with a moving chain
- ▶ chain is maintenance-free and must not be oiled, which means e.g. there are no oil stains on your vehicle or door
- ▶ self-locking motor ensures protection against burglary and intrusion; no additional locking mechanism necessary
- ▶ extremely quiet operation of the garage door

# aintenance, no noise, no kidding!



## Technology:

The patented technology offers a traveling motor that attaches directly to the garage door. There is only one moving part. The motor glides quietly along the stationary track. Stronger than a chain drive and quieter than a belt drive brought together in one state of the art design.

## synoris 550N

- 550 Newton force (equals ½ HP)
- for doors up to 550 lbs.
- 24V DC Motor, allows up to 70 door movements per hour
- AM 315 MHz, HomeLink® compatible radio frequency
- 4-button transmitter
- photo eyes set
- DeLuxe wall station

## synoris 800N

- 800 Newton force (equals 3/4 HP)
- for doors up to 1200 lbs.
- 24V DC Motor, allows up to 70 door movements per hour
- AM 315 MHz, HomeLink® compatible radio frequency
- 4-button transmitter
- photo eyes set
- DeLuxe wall station



**synoris**  
garage door operator



### synoris 550N (1/2HP)

synoris 550 + rail for 7 ft. door  
synoris 550 + rail for 8 ft. door  
synoris 550 + rail for 10 ft. door

item no. 2040V000  
item no. 2041V000  
item no. 2042V000

### synoris 800N (3/4HP)

synoris 800 + rail for 7 ft. door  
synoris 800 + rail for 8 ft. door  
synoris 800 + rail for 10 ft. door

item no. 4050V000  
item no. 4051V000  
item no. 4052V000

# The right accessories for your garage door

## The **SOMMER** radio control system – comfort at the press of a button:

With the radio transmitters from **SOMMER** you can remotely control your garage door opener easily and conveniently – no matter if it is raining, snowing, icy or dark.

### 4-button transmitter

item no. 4046V000

- can be used to open up to four doors
- AM 315 MHz, HomeLink® compatible radio frequency
- long range transmitter
- sleek stainless steel design
- small enough to fit in your pocket
- dust proof
- convenient holding clip
- fits on a key chain
- long battery life due to low power consumption



### Transmitter holder\*

item no. 4640V000

- holder for 4-button transmitter for attachment in car or wall mounting
- including fixing material



### Telecody/ wireless keypad

item no. 4077V000

- AM 315 MHz, HomeLink® compatible radio frequency
- up to 10 different entry codes
- long battery life due to low power consumption
- modern waterproof design
- soft touch keypad, illuminated by LED light
- direct access to the keypad, no cover to be removed
- sturdy aluminum mounting bracket

illuminated  
push-buttons



\* The 4-button transmitter can be fixed in all current vehicles without any problem using the holder.

# Door opener

## 2-channel radio receiver

item no. 4797V000

- enables to use the SOMMER remote control on other openers
- 2 relay outputs
- small housing, can be mounted with screws or adhesive tape
- 12-24 V AC/DC supply



## Accessories for even more safety:



## External release lock

item no. 5036V000

- safe and rapid emergency release in case there is no separate access to the garage
- unique 500 different lock/key combinations



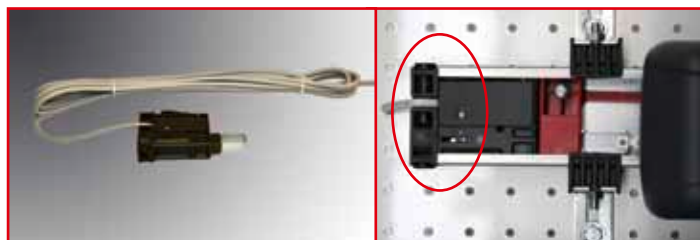
## Special application parts:



## 5 ft. rail extension

item no. 1628V000

- allows to extend the rail up to an additional 5 ft. travel length
- easy to attach to regular rail
- max. travel length is 14 ft.
- includes a second ceiling bracket



## Connector wire

item no. 913

- enables the power head to be separated from the rail
- ideal for small garages or where back beams would be in the way
- 24 Volt wiring and easy installation without the need of an electrician
- standard length of the wire is 16 ft. and can be shortened

# The right accessories

## More special application parts for your garage door opener:

### Swing door fitting

item no. 1501V000

- Economical option for swing doors
- Converts the SOMMER synoris to a swing door opener
- Photo eyes work in proper direction for swing doors
- For doors up to 9 ft. opening
- Adjustable fitting



### Side mount kit

item no. 3123V000

- allows to side mount the opener above the door track
- low head room applications
- no additional side room required
- easy installation, no angle irons needed
- max. door size: 12 ft. x 8 ft.



### Side opening sectional door fitting

item no. 3103

- for ceiling mounting with side-opening sectional door or side-opening door/gate
- for vertical operation of a high track door



# About the SOMMER Company



**SOMMER** is one of the leading manufacturers of high-quality operators and wireless control systems in Europe.

Our company was established in 1980 in Kirchheim/Teck in the South of Germany and has been flourishing since then. Since day one, **SOMMER** places great emphasis on outstanding quality and exceptional service and our main focus are our customers.

The innovative and multiple patented products are developed and assembled in the Stuttgart area. In this leading technological area of Germany, other well known companies such as Mercedes-Benz, Porsche and SAP find their origin as well.



SOMMER headquarters in Kirchheim/Teck, Germany



SOMMER company in Charlotte, NC

**SOMMER USA** is part of a worldwide network of 16 subsidiaries and agencies.. We proudly distribute our products from Charlotte, NC to all points throughout North and South America.

All of our products are engineered and manufactured in Germany to highest quality standards. We are a ISO 9001 certified company and we are committed to world class customer service and outstanding product quality.



**SOMMER** exclusively offers its products through professional garage door dealers .



# We always strive to have the ideal solution.

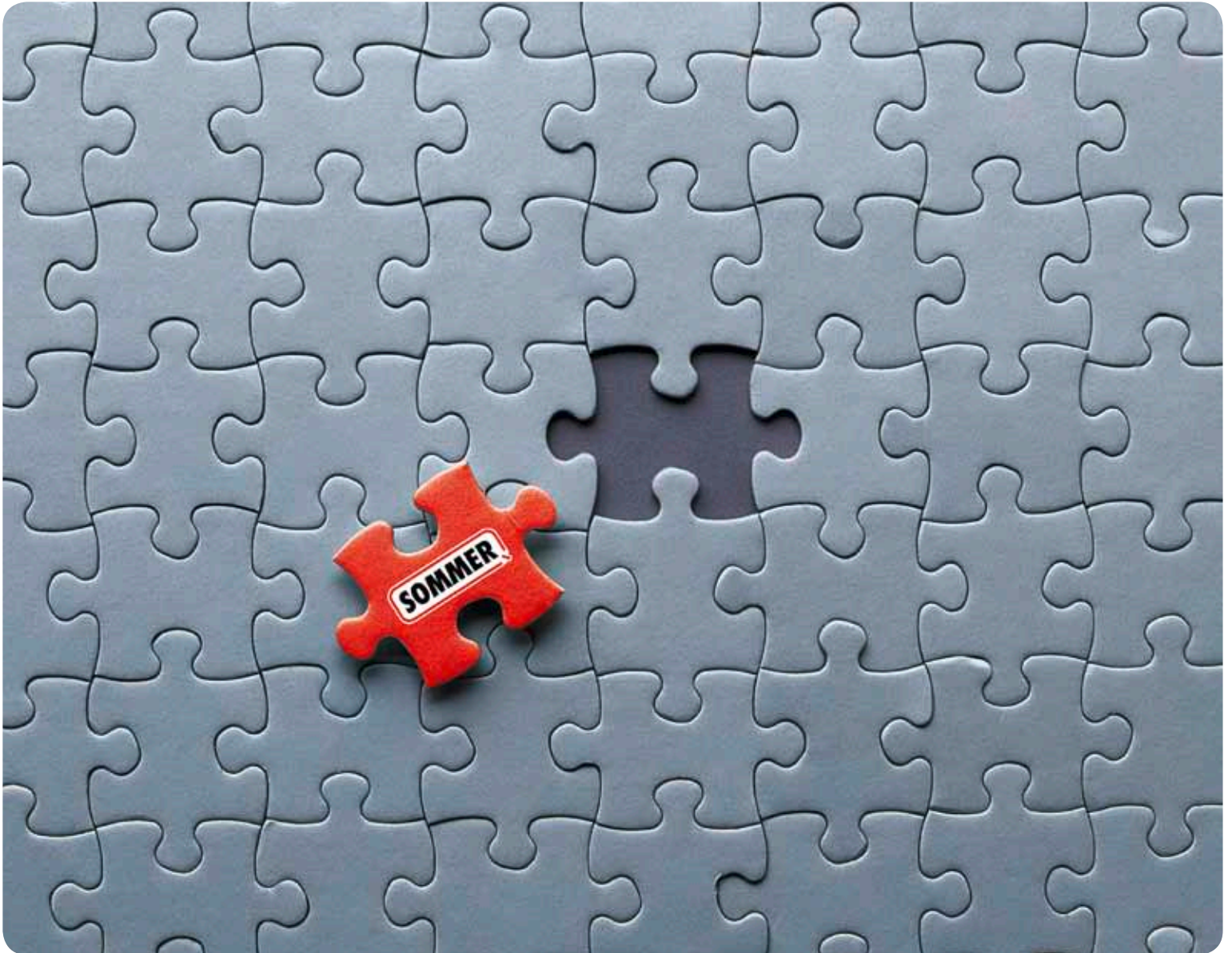
The **SOMMER** company together with their subsidiaries and partners in Europe, America and Asia offer you everything from one source. Our products stand for highest quality and innovative technology - "Made in Germany".

*Garage door openers  
Roller shutters operators  
Blocking systems*

*Swing gate operators  
Awning operators  
Aluminium front doors*

*Sliding gate operators  
Integrated operator systems  
Home Automation*

*Industrial door operators  
Roller door control unit  
Radio control system*



Visit our homepage:  
[www.sommer-usa.com](http://www.sommer-usa.com)

**SOMMER USA, Inc.**  
3308-C Oak Lake Blvd.  
Charlotte, NC 28208

Toll Free: 877-766-6607  
Phone: 704-424-5787  
Fax: 704-424-7699  
Mail: [info@sommer-usa.com](mailto:info@sommer-usa.com)